

TERTIANUM

Wohn- und Pflegezentrum am Rietpark, Schlieren

3½-Zimmer-Appartement

Typ 3.5 B

Wohnfläche

74.9 m²

Loggia

6.2 m²

Gesamtfläche

81.1 m²

Appartement Nr.

B1.W204

Appartement Nr.

B1.W304

Appartement Nr.

B1.W404

Appartement Nr.

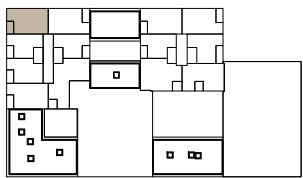
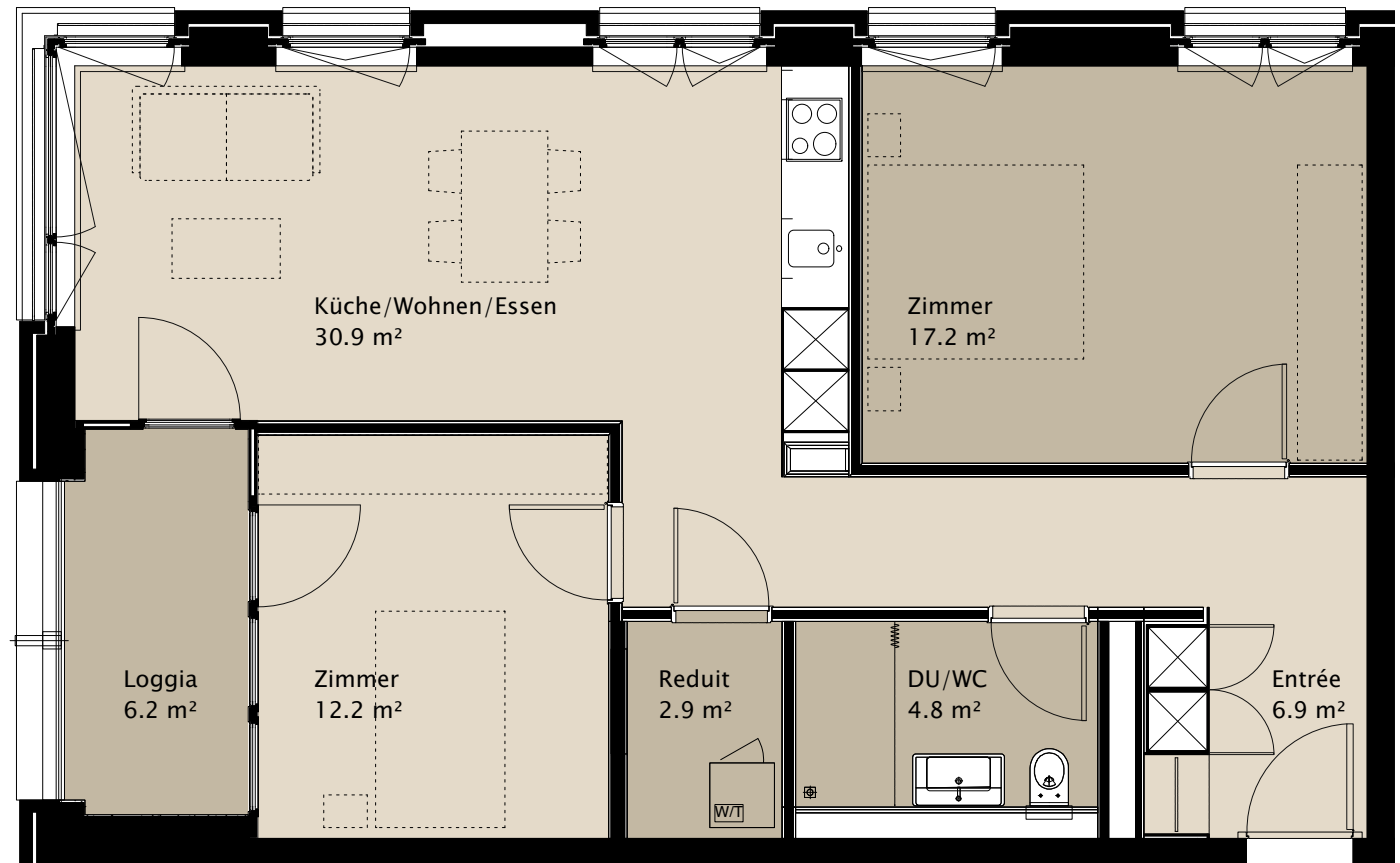
B1.W504

Appartement Nr.

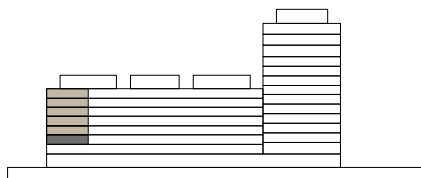
B1.W604

Appartement Nr.

B1.W704



8.
7.
6.
5.
4.
3.
2.
1.
EG
UG



0 2m