

TERTIANUM

Wohn- und Pflegezentrum am Rietpark, Schlieren

3½-Zimmer-Appartement

Typ 3.5 G

Wohnfläche

74.4 m²

Loggia

6.0 m²

Gesamtfläche

80.4 m²

Appartement Nr.

B3.W203

Appartement Nr.

B3.W303

Appartement Nr.

B3.W403

Appartement Nr.

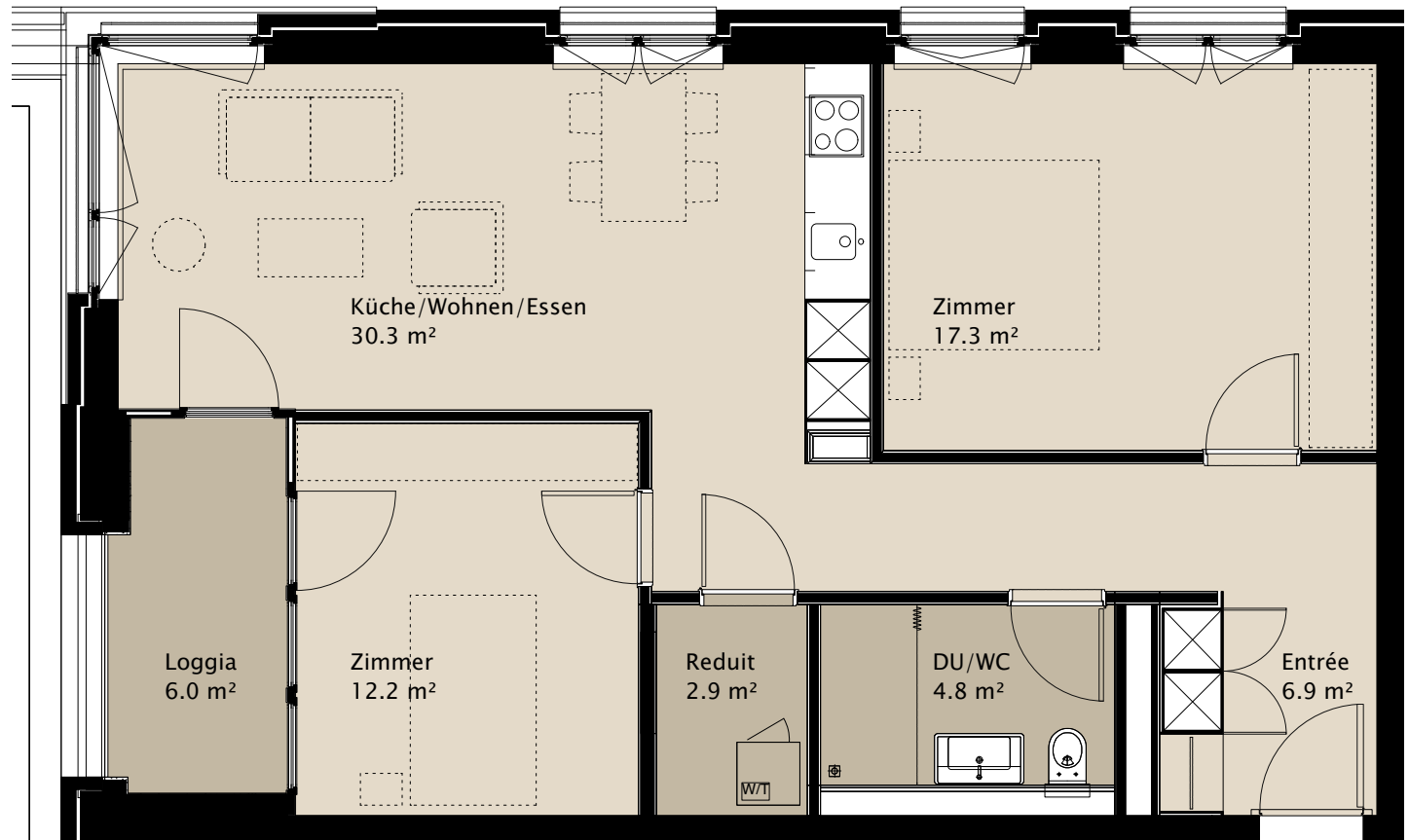
B3.W503

Appartement Nr.

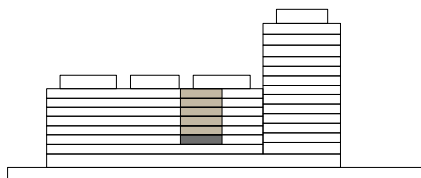
B3.W603

Appartement Nr.

B3.W703



8.
7.
6.
5.
4.
3.
2.
1.
EG
UG



0 2m