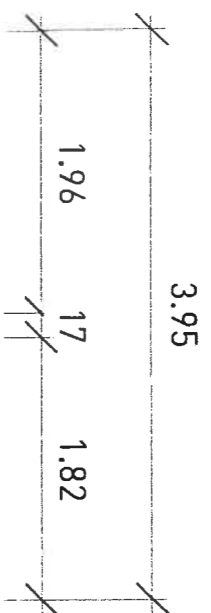


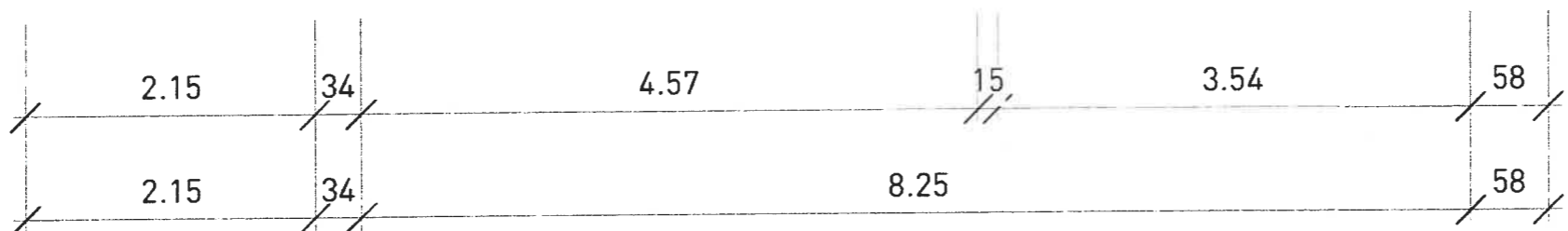
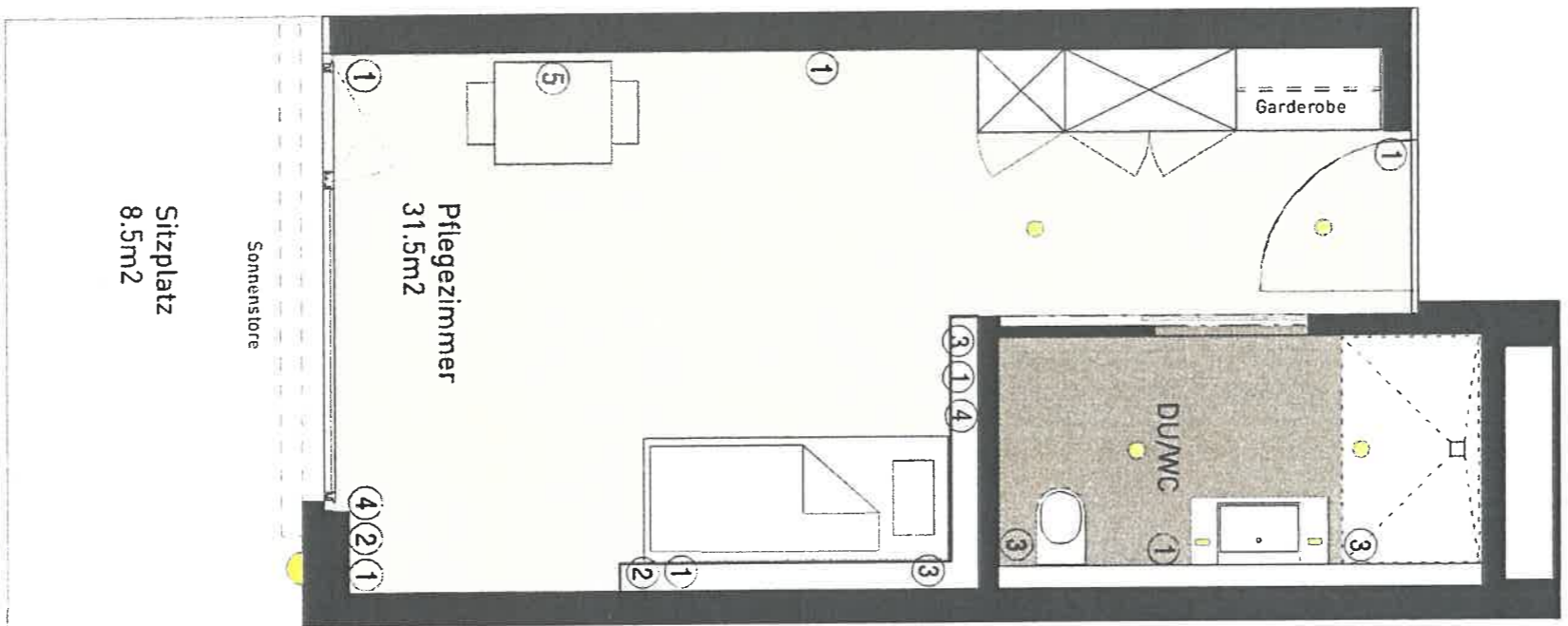
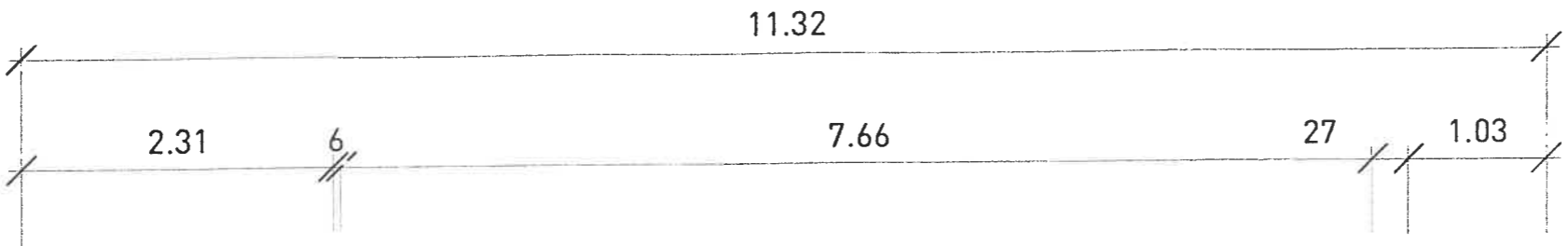
Pflegezimmer (Vermasst, Elektro)

Massstab 1:50



Zimmer:

A 0.01	A 0.07
A 0.03	A 0.09
A 0.05	A 0.11



- 1. Steckdose 230 V
- 2. Radio / TV
- 3. Notruf
- 4. Telefon
- 5. Deckenanschluss

