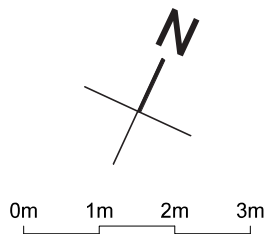
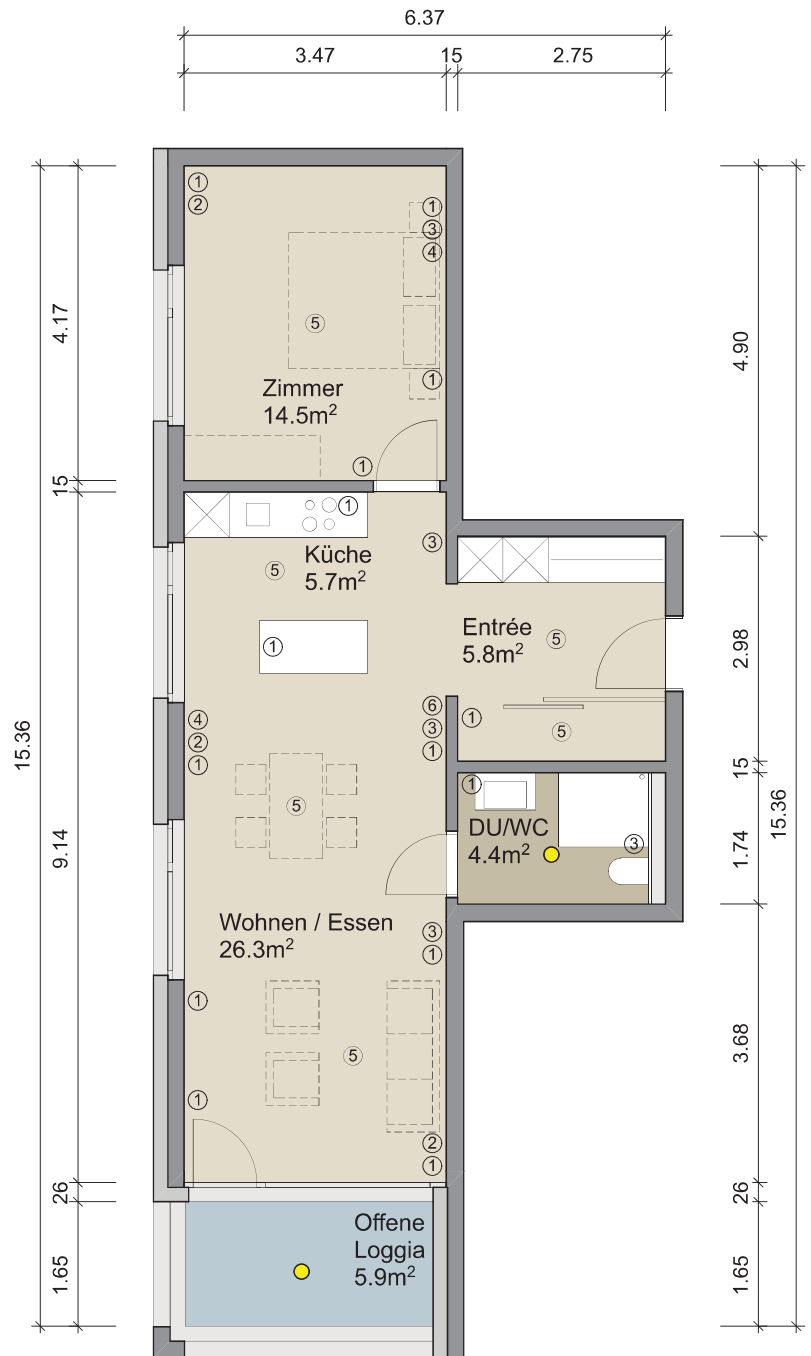


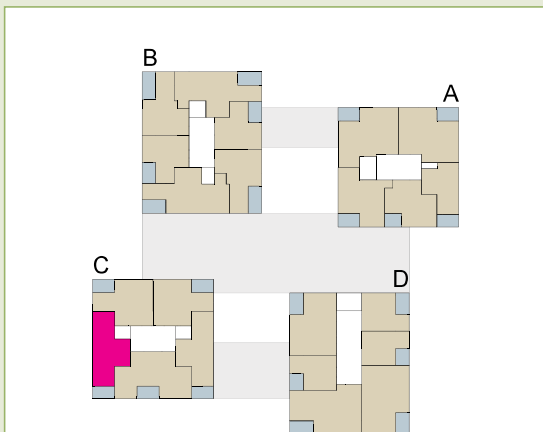
- ① Steckdose
- ② Radio/TV
- ③ Notruf (Ruftaster)
- ④ Telefon
- ⑤ Deckenanschluss
- ⑥ Gegensprechanlage
- Deckenleuchte



Masstab 1:100



### Übersicht Häuser



Appartement: C 1.03  
C 2.03  
C 3.03

### 2 1/2-Zimmer-Appartement

56.7 m<sup>2</sup>

|              |                           |
|--------------|---------------------------|
| Entrée       | 5.8 m <sup>2</sup>        |
| DU/WC        | 4.4 m <sup>2</sup>        |
| Wohnen/Essen | 26.3 m <sup>2</sup>       |
| Küche        | 5.7 m <sup>2</sup>        |
| Zimmer       | 14.5 m <sup>2</sup>       |
| <b>Total</b> | <b>56.7 m<sup>2</sup></b> |
| Loggia       | 5.9 m <sup>2</sup>        |