

TERTIANUM

Wohn- und Pflegezentrum am Rietpark, Schlieren

3½-Zimmer-Appartement

Typ 3.5 C

Wohnfläche

75.4 m²

Loggia

6.6 m²

Gesamtfläche

82.0 m²

Appartement Nr.

B1.W205

Appartement Nr.

B1.W305

Appartement Nr.

B1.W405

Appartement Nr.

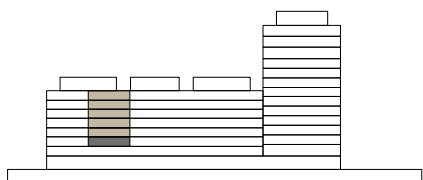
B1.W505

Appartement Nr.

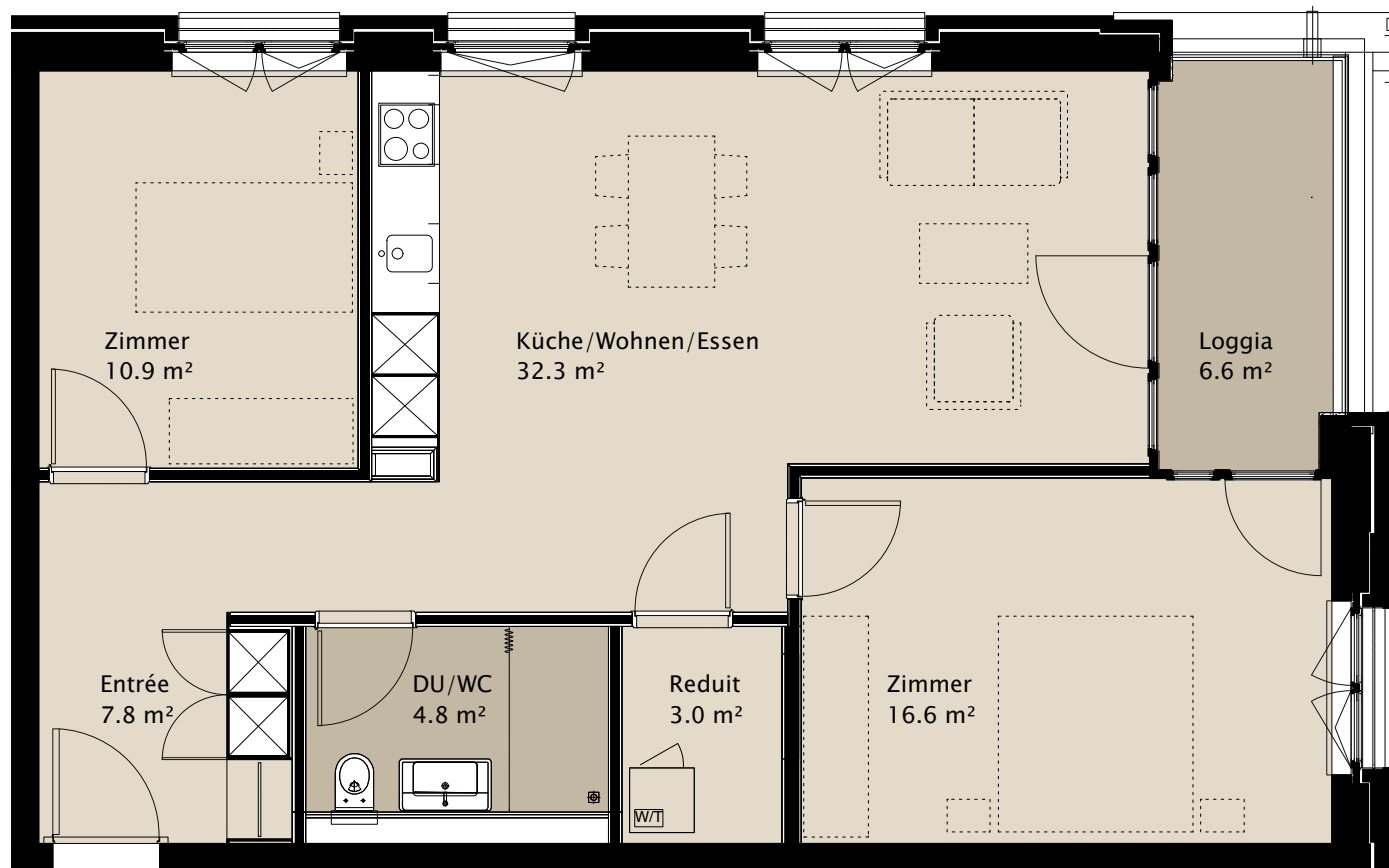
B1.W605

Appartement Nr.

B1.W705



8.
7.
6.
5.
4.
3.
2.
1.
EG
UG



0 2m