

# TERTIANUM

Wohn- und Pflegezentrum am Rietpark, Schlieren

3½-Zimmer-Appartement

Typ 3.5 G

Wohnfläche 74.4 m<sup>2</sup>

Loggia 6.0 m<sup>2</sup>

Gesamtfläche 80.4 m<sup>2</sup>

Appartement Nr. **B3.W203**

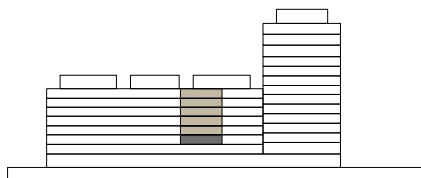
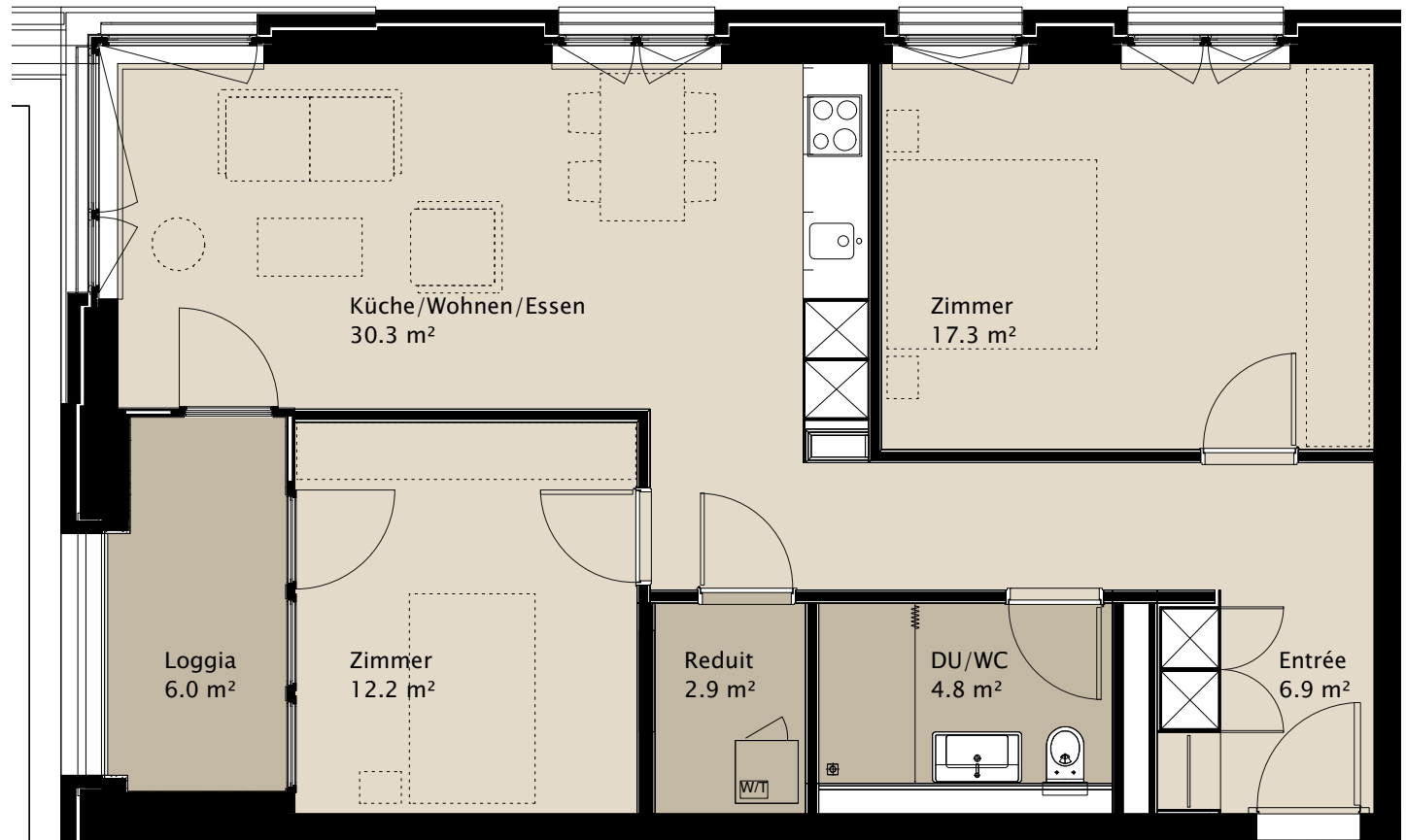
Appartement Nr. B3.W303

Appartement Nr. B3.W403

Appartement Nr. B3.W503

Appartement Nr. B3.W603

Appartement Nr. B3.W703



8.  
7.  
6.  
5.  
4.  
3.  
2.  
1.  
EG  
UG

