

TERTIANUM

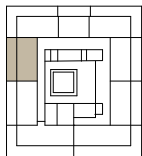
Wohn- und Pflegezentrum Rosenau, Bazenheid

2½-Zimmer-Appartement

Wohnfläche 54.2 m²
Terrasse 21.5 m²

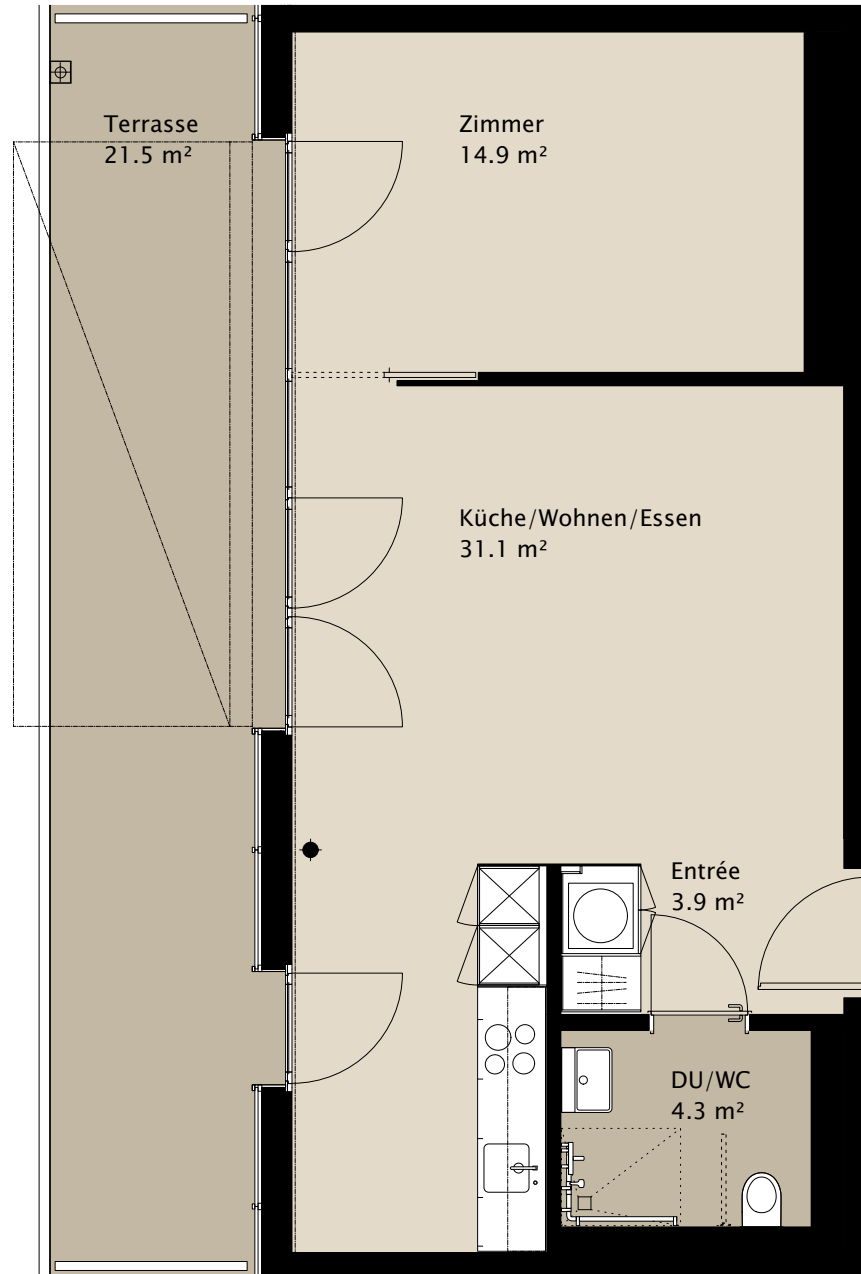
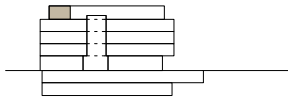
Gesamtfläche 75.7 m²

Appartement Nr. 403



DC

4.
3.
2.
1.
EG
1.UG
2.UG



0 2m