

TERTIANUM

Wohn- und Pflegezentrum Blumenapark, Unterterzen

2½-Zimmer-Apartment

Typ 2.5 B

Wohnfläche

52.2 m²

Terrasse

44.2 m²

Gesamtfläche

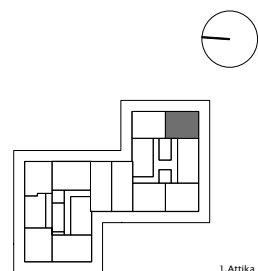
96.4 m²

Apartment Nr.

W-305

Apartment Nr.

W-404



1. Attika



2. Attika
1. Attika
2.OG.
1.OG.
EG.
UG.

