

TERTIANUM

Centro abitativo e di cura Conaredo, Lugano

appartamento 2½-locali

tipo 2.5 B

superficie abitativa

52.2 m²

terrazza

15.1 m²

superficie totale

67.3 m²

appartamento no.

B.3.03

appartamento no.

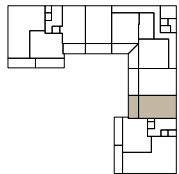
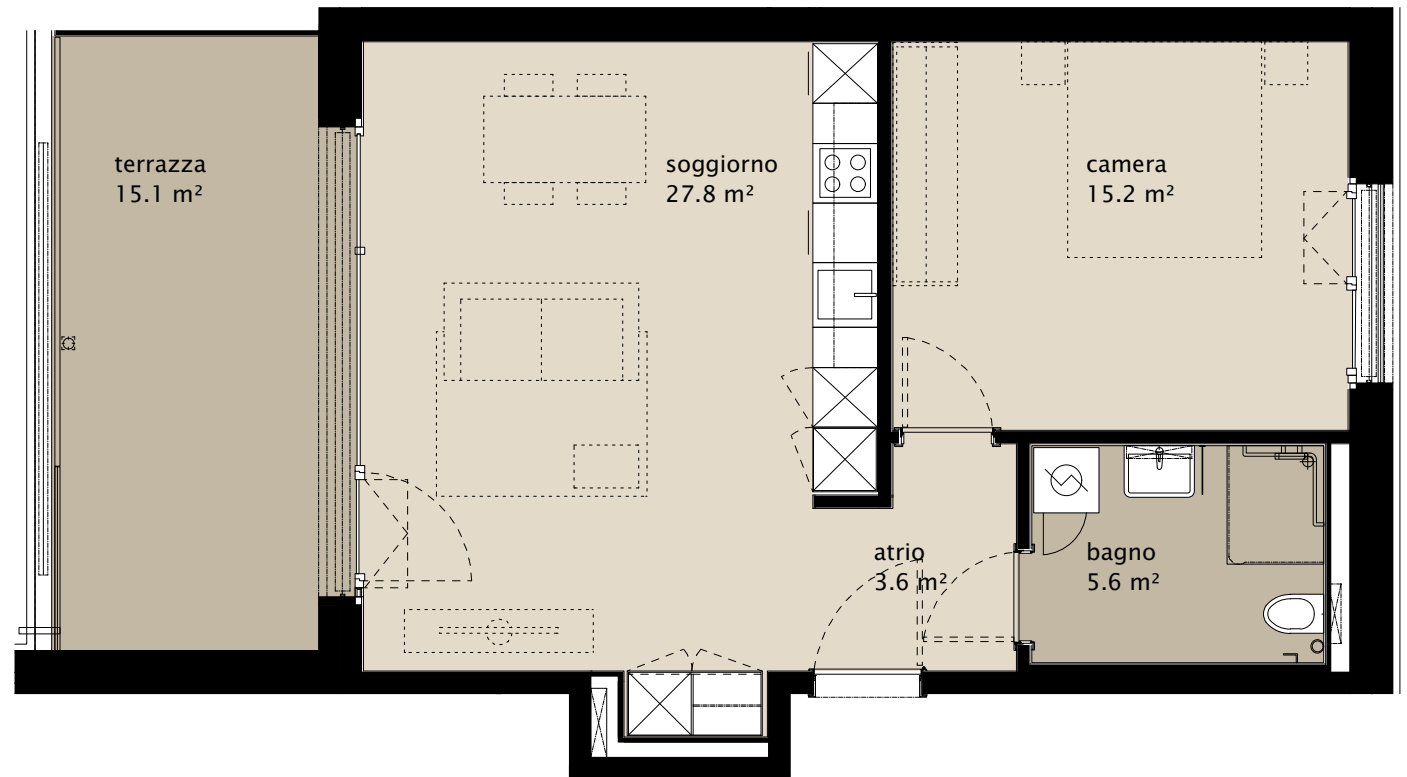
B.4.03

appartamento no.

B.5.03

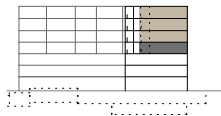
appartamento no.

B.6.03



3.0G

6.
5.
4.
3.
2.
1.
EG
UG 1
UG 2



0 2m